

RICO[®]
DESIGN



Rico Design Essentials Merino DK Jumper

Size
 Bust: 81 [86: 91: 97: 102: 107: 112: 117] cm, 32 [34: 36: 38: 40: 42: 44: 46] in
 Actual bust: 96 [102: 107: 113: 119: 125: 131: 137] cm, 37 ¾ [40: 42: 44 ½: 47: 49 ½: 51 ½: 54] in
 Actual Length to Shoulder: 58 [60: 61: 62: 64: 66: 68: 69] cm, 22 ¾ [23 ¾: 24: 24 ½: 25 ¼: 26: 26 ¾: 27 ¼] in
 Sleeve Length: 43 [46: 46: 46: 46: 47: 47: 48] cm, 17 [18: 18: 18: 18: 18 ½: 18 ½: 19] in

Materials
 Rico Design Essentials Merino DK:
 Shade 080 X 12[13:13:14:14:15:15:16] x 50 gm balls
 3.25mm (UK 10) and 4mm (UK 8) knitting needles
 3.25mm (UK 10) circular knitting needles, approx. 80 cm in length
 2 stitch holders/2 split ring place markers

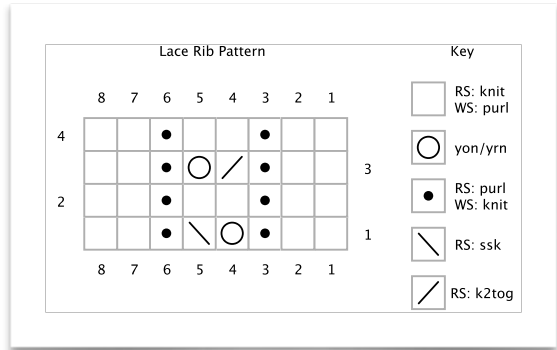
Tension
 20.5 sts and 30 rows to a 10 cm (4 in) square in Texture Pattern with 4mm needles.

Abbreviations
 st/sts – stitch/stitches
 RS/WS- right side/wrong side
 K/p- knit/purl
 Rep/patt – repeat/pattern
 K2tog – knit 2 sts together
 Skpo – slip one stitch knitwise, k1, pass slipped stitch over
 Dec 1 st – decrease 1 st: Worked on a RS row, work k2, skpo at the beg of a row and a k2tog, k2 at the end of a row, and on a WS row, work p2, p2tog at the beg of a row, and a p2tog tbl, p2 at the end of a row.
 Inc in first/last stitch – knit into the front and back of a stitch if the stitch to be worked is a knit stitch, purl into the front and back of a stitch if the stitch to be worked is a purl stitch
 M1 - Make one stitch: use the bar between the stitch you have just knitted and the one you are just about to knit. Pick it up with the left needle from front to back. Knit into the back of this stitch to create a new stitch.
 CDD - central double decrease: slip 2 sts together to the right needle as if to k2tog, k1, then pass the 2 slipped sts together over the k1.
 Yon/yrn– yarn over needle/yarn round needle
 Rnd(s) – round(s)

Pattern Stitches
Lace Rib pattern
Worked over multiples of 6 sts and 4 rows.
Row 1 (RS): K1, *k1, p1, yon, skpo, p1, k1: rep from * to last st, k1.
Row 2: P1, *p1, k1, p2, k1, p1: rep from * to last st, p1.

Row 3: K1, *k1, p1, k2tog, yrn, p1, k1: rep from * to last st, k1.
Row 4: Repeat row 2.

Charted Instructions:



Stocking Stitch (st st)

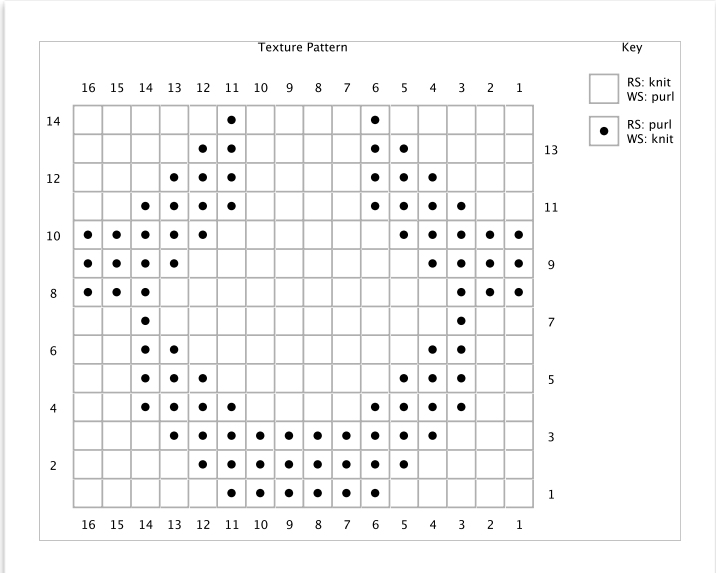
Row 1 (RS): Knit.
Row 2: Purl.

Texture Pattern

Worked over 16 sts and 14 rows.

- Row 1 (RS):** K5, p6, k5.
- Row 2:** P4, k8, p4.
- Row 3:** K3, p10, k3.
- Row 4:** P2, k4, p4, k4, p2.
- Row 5:** K2, p3, k6, p3, k2.
- Row 6:** P2, k2, p8, k2, p2.
- Row 7:** K2, p1, k10, p1, k2.
- Row 8:** Repeat row 3.
- Row 9:** Repeat row 2.
- Row 10:** Repeat row 1.
- Row 11:** K2, p4, k4, p4, k2.
- Row 12:** P3, k3, p4, k3, p3.
- Row 13:** (K4, p2) x 2, k4.
- Row 14:** P5, k1, p4, k1, p5.

Charted Instructions:



Instructions

Back.

**Using 3.25mm (UK 10) needles, cast on 98[104:110:116:122:128:134:140] sts. Work in Lace Rib pattern across all sts from row 1 for 14 cm, ending with a WS row and measured from the cast on edge.

Change to 4mm (UK 8) needles and work in Texture Pattern as follows:

Row 1 (RS): K1[4:7:2:5:0:3:6], Texture Pattern row 1 across 96[96:96:112:112:128:128:128] sts, k1[4:7:2:5:0:3:6].

Row 2: P1[4:7:2:5:0:3:6], Texture Pattern row 2 across 96[96:96:112:112:128:128:128] sts, p1[4:7:2:5:0:3:6].

These 2 rows set the position of the patterns: the edge 1[4:7:2:5:0:3:6] sts worked in st st (k on the RS and p on the WS), and the central 96[96:96:112:112:128:128:128] sts worked in Texture Pattern.

Cont in patt as set till work measures 37[39:39:39:40:41:42:43] cm, ending with a WS row and measured from the cast on edge.

Shape Armhole.

Keeping pattern correct, cast off 4[4:5:5:6:6:7:8] sts at the beg of the next 2 rows. 90[96:100:106:110:116:120:124] sts. Dec 1 st at both ends of the next and every RS row till there are 80[82:84:88:92:94:98:100] sts remaining. **

Cont straight in patt as set till work measures 56[58:59:60:62:64:66:67] cm, ending with a WS row and measured from the cast on edge.

Shape Shoulder.

Cast off 5[5:5:6:6:6:7:7] sts at the beg of the next 6[4:4:6:4:2:6:6] rows.
Cast off 0[6:6:0:7:7:0:0] sts at the beg of the next 0[2:2:0:2:4:0:0] rows. Put rem 50[50:52:52:54:54:56:58] sts onto a holder.

Front

Work ** to ** as for the Back.

Cont straight in patt as set till work measures 49[51:52:53:54:56:58:59] cm, ending with a WS row and measured from the cast on edge.

Shape Left Neckline.

Next row (RS): pattern 24[25:25:27:29:30:31:31], turn and put the rem sts onto a holder. Work with these 24[25:25:27:29:30:31:31] sts.

Cont in patt as set and dec 1 st at the neck edge on the next 4 rows. 20[21:21:23:25:26:27:27] sts.

Work one row straight then dec 1 st at the neck edge on the next row, a RS row, and every RS row till 15[16:16:18:19:20:21:21] sts remain. Work straight in patt as set till work measures the same as the Back to the Shoulder and ending with a WS row.

Shape shoulders

Cast off 5[5:5:6:6:6:7:7] sts at the beg of the next 3[2:2:3:2:1:3:3] RS rows.

Cast off 0[6:6:0:7:7:0:0] sts at the beg of the next 0[1:1:0:1:2:0:0] RS rows.

Shape Right Neckline.

With RS facing, leave the central 32[32:34:34:34:34:36:38] sts on the holder, join yarn at the neck edge and patt to end. 24[25:25:27:29:30:31:31] sts.

Cont in patt as set and dec 1 st at the neck edge on the next 4 rows. 20[21:21:23:25:26:27:27] sts.

Work one row straight then dec 1 st at the neck edge on the next row, a RS row, and every RS row till 15[16:16:18:19:20:21:21] sts remain. Work straight in patt as set till work measures the same as the Back to the Shoulder and ending with a RS row.

Shape shoulders

Cast off 5[5:5:6:6:6:7:7] sts at the beg of the next 3[2:2:3:2:1:3:3] WS rows.

Cast off 0[6:6:0:7:7:0:0] sts at the beg of the next 0[1:1:0:1:2:0:0] WS rows.

Sleeves

Make 2. Both alike.

With 3.25mm (UK 10) needles, cast on 56[56:58:58:62:62:64:64] sts. Work in Lace Rib pattern as follows

Row 1 (RS): K0[0:1:1:0:0:1:1], Lace Rib pattern row 1 across 56[56:56:56:62:62:62:62] sts, k0[0:1:1:0:0:1:1].

Row 2: P0[0:1:1:0:0:1:1], Lace Rib pattern row 2 across 56[56:56:56:62:62:62:62] sts, p0[0:1:1:0:0:1:1].

These 2 rows set the position of the patterns: the edge 0[0:1:1:0:0:1:1] sts worked in st st (k on the RS and p on the WS), and the central 56[56:56:56:62:62:62:62] sts worked in Lace Rib pattern. Cont in patt till work measures 8 cm, ending with a WS row.

Change to 4mm (UK 8) needles and work in Texture Pattern as follows:

Row 1 (RS): K4[4:5:5:7:7:0:0], Texture Pattern row 1 across 48[48:48:48:48:48:64:64] sts, k4[4:5:5:7:7:0:0].

Row 2: P4[4:5:5:7:7:0:0], Texture Pattern row 2 across 48[48:48:48:48:48:64:64] sts, p4[4:5:5:7:7:0:0]. These 2 rows set the position of the patterns: the edge 4[4:5:5:7:7:0:0] sts worked in st st (k on the RS and p on the WS), and the central 48[48:48:48:48:48:64:64] sts worked in Texture Pattern.

Work the first sleeve increase on the next row as follows:
Next row (RS) (inc): Kfb, patt to last st, kfb. (inc of 2 sts)
Rep this inc row every foll 8th[8th:6th:6th:6th:4th:4th] row till there are 74[78:82:84:86:90:94:96] sts, working increased sts in st st till there are enough stitches to work additional patt reps.

Work straight till sleeve measures 43[46:46:46:46:47:47:48] cm, measured from the cast on edge and ending with a WS row.

Shape Sleeve Cap.

Keeping pattern correct, cast off 4[4:5:5:6:6:7:8] sts at the beg of the next 2 rows. 66[70:72:74:74:78:80:80] sts.
Dec 1 st at both ends of the next and every row for 4 rows. 58[62:64:66:66:70:72:72] sts.
Dec 1 st at both ends of the next and every RS row for a total of 8[10:10:12:12:12:14:14] rows. 50[52:54:54:54:58:58:58] sts.
Work 4[4:4:6:8:10:10:10] rows straight in patt as set.
Dec 1 st at both ends of the next and every RS row for a total of 8[10:12:12:12:14:14:14] rows. 42[42:42:42:42:44:44:44] sts.
Dec 1 st at both ends of the next and every row for 4 rows. 34[34:34:34:34:36:36:36] sts.

Cast off 11 sts at the beg of the next 2 rows. Cast off rem sts.

To make up

Weave in ends and block pieces lightly.

Neckline.

Sew both shoulder seams. With RS facing, 3.25mm (UK 10) circular needles and starting at the right front, (at the end of the front neck stitches, pick up and knit 18[18:20:20:22:22:21:23] sts across the right front neck, , knit the 50[50:52:52:54:54:56:58] sts from the back holder, pick up and knit 18[18:20:20:22:22:21:23] sts along the left front neck, PM, knit the 32[32:34:34:34:34:36:38] sts from the Front holder, PM. 118[118:126:126:132:132:134:142] sts.

Join, and work as follows:

Rnd 1 (RS): K1, *k1, p1, yon, skpo, p1, k1: rep from * to 1 st before marker, k1, SM, k to end of rnd, slip marker.

Rnd 2: K1, * k1, p1, k2, p1, k1: rep from * to 1 st before marker, k1, SM, k to end of rnd, slip marker.

Rnd 3: K1, *k1, p1, k2tog, yrn, p1, k1: rep from * to 1 st before marker, k1, SM, k to end of rnd, slip marker.

Rnd 4: Repeat rnd 2.

Now cast off garter stitch section at the front (the knit stitches between the markers over the front neck stitches) as follows:

Next: K1, *k1, p1, yon, skpo, p1, k1: rep from * to 1 st before marker, k1, cast off these 32[32:34:34:34:34:36:36] sts.

Turn and work flat as follows:

Row 1 (WS): P1, *p1, k1, p2, k1, p1: rep from * to last st, p1.

Row 2 (RS): K1, *k1, p1, k2tog, yrn, p1, k1: rep from * to last st, k1.

Row 3: Repeat row 1.

Row 4: K1, *k1, p1, yon, skpo, p1, k1: rep from * to last st, k1. Rep these 4 rows once more, ending with a RS row.

Cast off in rib pattern on the WS.

Sew sleeve caps into armholes. Sew sleeve and side seams. Weave in any other ends. See ball band for further care instructions.